

OTHER PROJECT UPDATES: OCTOBER 2011

BOYSTOWN



- The contractor is on site and has commenced with the installation of services and infrastructure in Phase 1 which is 55% completed.
- Construction of the houses for the Boystown project will start soon.
- The sorting and removal of waste material and rubble is 95% complete.
- Employment opportunities are an important part of the project. Allocation of labour per area, has been communicated to the PSC members and will also be communicated at a public meeting to be held in October 2011.
- Lists and the allocations criteria to be communicated to the beneficiary community at a public meeting.
- Voluntarily relocations of non-qualifiers to TRA 5 in Delft will be communicated to the affected parties.

DELFT SYMPHONY



- The first handovers were done in December 2010. Construction of the remaining houses is currently underway and progressing well. 625 houses were handed over between December 2010 and September 2011.
- Eskom started construction on 8 August 2011 to address the inadequate capacity. Regular meetings take place with community leaders to update the community on progress. 250 units will receive electricity and from there on batches of 100 units for the duration of the project.
- Waste management is a concern in the area and discussions with City of Cape Town to address the situation are underway.

JOE SLOVO



- 159 housing units are under construction and 62 foundations are complete.
- Approved beneficiary endorsements in the three Joe Slovo areas have been concluded with the assistance and cooperation of the Joe Slovo Project Steering Committee. A general meeting will be held in each area to finalise the endorsed lists.
- 435 shacks are currently occupying the area for the construction of the Blue Gum Extension and Winnie Mandela Drive. These have to be relocated to clear the way for construction, which is expected to commence mid October 2011.
- A general meeting of the Joe Slovo community is planned for late October 2011 to advise and or update the community about the development.

USEFUL CONTACT NUMBERS

Housing Development Agency (HDA) Helpdesk: 021 481 2900
City of Cape Town (service queries, complaint & accounts): 0860 103 089
Province of the Western Cape (general queries): 0860 142 142
Emergencies (when life or property is threatened): Call from cell phone: 112
Childline: (help when a child is in danger) 08000 55 555 /021 7628198
Solid Waste (illegal dumping, wheelie bins, cleaning): 0860 103 089
Eskom customer care: 0860 037 566
Public transport information: 0800 656 463
City of Cape Town (service queries, complaints & accounts): 0860 103 089
Anti-land invasion: 0800225669



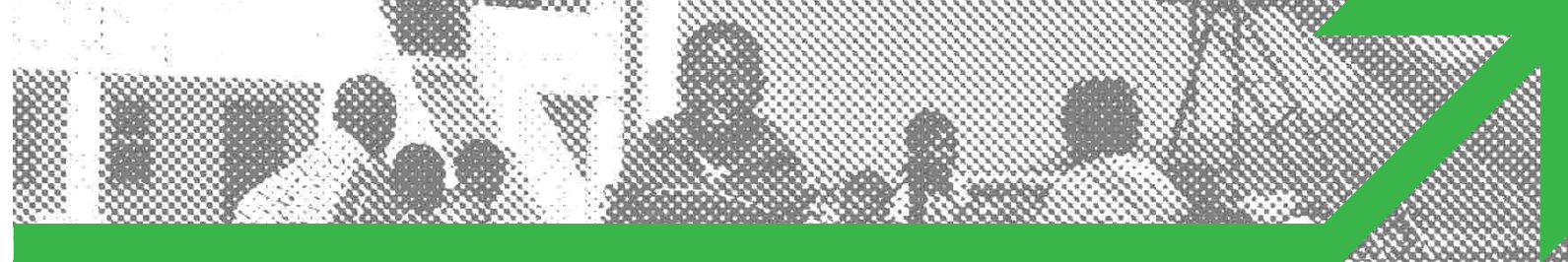
human settlements
 Department:
 Human Settlements
 REPUBLIC OF SOUTH AFRICA



DEPARTMENT of
 HUMAN SETTLEMENTS
 Provincial Government of the Western Cape



CITY OF CAPE TOWN | ISIKHOKO SASEKAPPA | STAD KAAPSTAD
 THIS CITY WORKS FOR YOU



N2 Gateway Community Newsletter

OCTOBER 2011 No 3

The N2 Gateway Project started in 2005 and phase one is nearing completion. It is a project of the National Department of Human Settlements. Phase one will deliver about 15 000 houses. The project provides houses for residents of the informal settlements and backyarders along the N2. **Current projects include the following:** Joe Slovo • Delft Symphony • Delft 7-9 • Boystown • Temporary Relocation Areas (TRAs)

HELPING ENSURE A BETTER FUTURE FOR THE YOUNG PEOPLE OF DELFT

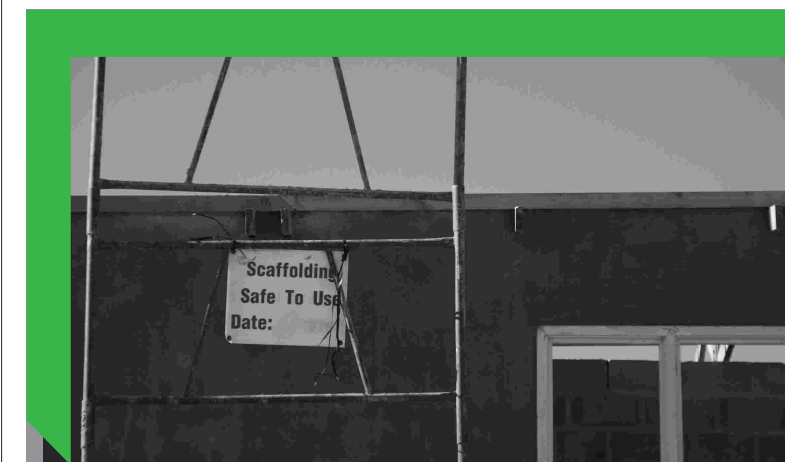
Unemployment, particularly among younger people, remains a major challenge for the N2 Gateway communities. A community-based group in Delft, however, is making plans to address this challenge by arranging training and skills development for the local youth. This will greatly improve their chances of finding work in today's tough job market.



Leiden Community Youth, which is currently operating out of Delft Sports Centre, has developed a business plan for local youth to receive training in many aspects of construction as the Delft project is further developed. Plumbing, electrical, roofing, doors, painting and plastering are just some of the areas where unemployed people from the community will be skilled. Leiden has made arrangements with the contracted developers to take on these community members and provide them with on-site training.

Frederick Straus is one of the Leiden organisers. He explains that the goal is to have a "youth organisation that inspires, educates and trains." The organisation's constitution

emphasises the need for democratic decision-making and building a sense of civic responsibility through a volunteer service. It is Leiden's vision and hope that the whole community



of Delft and its surrounds will benefit through the empowerment and skilling of local young people.

Sicelo is 30 and has lived in the Delft community for over five years. He is interested in a career in plumbing. Babalwa is 24, has one small child as has lived in the community for four years. She is interested with gaining skills in electrics. Skills such as these are very valuable to gain. While job losses continue in sectors such as agriculture and manufacturing, there is significant growth in the construction industry in the Western Cape.

But it's not only about work! Leiden is also planning to promote participation in sports, arts and culture, and have made links with other community organisations with these objectives in mind. Cultural and recreational development is also very important to the future of Delft. Leiden plans to build links with corporations who may provide some support for activities such as these.

MESSAGE FROM MAYCO



A Message from Cllr. Sonnenberg, the Mayco member for Human Settlements in the City of Cape Town

It gives me great pleasure to write the introduction to the N2 Gateway's October Newsletter. This newsletter is sorely needed because the general public and the beneficiary communities need to be informed about the progress made in this project.

A healthy relationship between the 3 spheres of government and the HDA exists via the various committees namely the N2 Steering Committee, the Technical Committee, the Allocations Committee and the Communications Committee.

The project encompasses all the facets of the Human Settlements Development Plan (Breaking New Ground). Houses are being allocated on a monthly basis. Communities are being consulted when the project steering committees are set up. The greening of open spaces in Delft is ongoing and there are plans for the development of vegetable gardens (agri-sites) for the community to grow food. A primary and high school will be ready for the new school year in 2012. The community centre and community crèche is being utilized by the community in general and working parents in particular. Lastly, the Delft area has become a truly non-racial community because of the N2 Gateway Project.

As you well know, the housing shortage in Cape Town is monumental. I am therefore elated by the progress made in the project. I would therefore like to commend all officials involved in this project with all its complexities and sensitivities.

Thank you for a job well done.

Ernest Sonnenberg
Mayco member for Human Settlements

PROTECT YOURSELF AND YOUR FAMILY - PREVENT FIRES!

Warmer weather is on the way and with that comes an increased risk of fires in our communities. Every year in Cape Town people die in house and shack fires and many others are severely injured. Small children are particularly vulnerable. Fire safety is the responsibility of all community members.

Here are a few tips:

- Keep matches, lighters, paraffin and poisons safe and out of reach from young children
- Never allow anyone to smoke in bed
- Make sure candles are extinguished and oil lamps are turned off before you go to bed or leave your home
- Your stove should be placed on a flat surface, away from drafts and away from anything that can burn
- Never leave a burning stove unattended



If a fire breaks out:

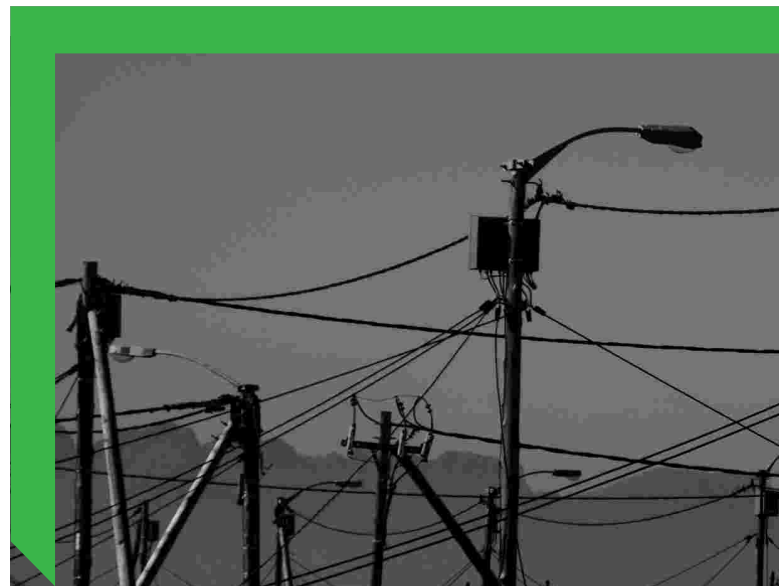
- Make sure everyone gets outside immediately – help children, the elderly and disabled
- Exit the house or shack by crawling under the worst of the smoke

services on 107 to get help
• Keep roads clear so the fire engines can get to the fire quickly
• Keep spaces in front of hydrants clear

ELECTRIFICATION OF DELFT SYMPHONY

N2 Gateway residents will be aware of the problem of new houses being invaded and occupied by non-qualifying people. In order to help prevent this, the Housing Development Agency (HDA) agreed, in this instance at the Delft Symphony project, that the rightful beneficiaries could move into their houses upon completion even before the electricity was connected. While this situation was communicated to Delft Symphony residents as part of their consumer education, it has not made the wait for power connection any easier.

It is Eskom and not the City of Cape Town that has the responsibility to provide new residential areas with electricity. In most cases Eskom requires that 85 percent of houses in any new community be completed before electricity is connected. It is important to remember that Eskom is a separate parastatal authority and does not have to take direction from the City or the HDA. Even so, Eskom has been responsive to requests from the HDA that electrification of Delft Symphony be made a top priority.



Electrical poles were installed in August and Eskom has agreed to connect power to the houses in batches of 250 to begin with, and then in batches of 100 (there will be 1849 new houses altogether). The HDA has also been negotiating with Eskom to ensure that those who have been waiting the longest are connected first.

Community leaders and the PSC representatives in Delft Symphony must ensure that their people are properly informed of the situation. Residents may also come to the site office and speak to the HDA manager Hannetjie Groenewald for up to date information on electrification. She is intending to hold small local meetings to keep everyone informed on this critical issue.

IMPROVING YOUR HOUSE – KEEP IT LEGAL



As a home owner you are able to make improvements and extensions to your house. But, by law, any structural changes you wish to make must be first approved in writing by the City of Cape Town. If you want to make structural changes to your house you will need use the services of a registered draftsman



or architect. He or she will draw up the plans and submit them to the City on your behalf. In addition to the cost for the services of the draftsman, you will also need to pay a fee to the City for the approval process. However, such fees can be reduced for people on low incomes.

Home owners who go ahead and make structural changes without getting approval are subject to fines. City inspectors

routinely go from area to area to determine where illegal work is being done. These rules are not meant to discourage home owners from making improvements; they are there to ensure that basic standards of health and safety are met. The City must be satisfied that when people make changes to existing housing they use proper materials, create sound structures and that the changes do not constitute a fire, flood or electrical hazard.

It is best to ensure that any structural changes you make to your house are legal and that such changes are built to last. It may be good idea to save money over the medium to long term towards the goal of improving and/or expanding your house.

TITLE DEEDS – FOLLOW UP

There was an excellent response to the article in the August issue of this newsletter on the importance of residents claiming the Title Deed for their property. If you live in Delft 7-9 you may collect your title deed at the TRA 5 office on the corner of Symphony Way and Delft Main Road (next to the cemetery). If you live in any other N2 Gateway development you may pick up your title deed at the HDA office in central Cape Town – 129 Bree Street near the corner of Wale Street. In either event please remember to bring your ID book (and your spouse's ID book) as well as proof of residence (such as a municipal bill).

YOUR PROJECT STEERING COMMITTEE (PSC) – HAVE YOUR SAY

As part of the social compact between the Housing Development Agency (HDA) and the communities it serves, each development in the N2 Gateway has a Project Steering Committee (PSC). Among other functions, the PSCs should ensure that the intended beneficiaries receive ongoing information about the progress of the development and that there is a flow of information between the beneficiaries and other the stakeholders involved. The PSC should be the forum where community members can interact with the developers, express concerns, ask questions, make suggestions, resolve misunderstandings, etc. Meetings are usually held monthly. The membership of each PSC is made up of representatives from the various stakeholder groups including the community members. The community representatives are democratically elected from the various precincts (e.g. Delft Symphony project precincts 1&2, 4&6, etc). They are responsible for raising the concerns of residents and feeding information back to the communities. Residents also have a responsibility to engage their representatives, raise issues with them and make sure they are speaking with the communities they represent.

The PSC structure can be an effective forum to ensure that the NG Gateway projects progress democratically and in a way that benefits all. But it is, in part, up to the community members themselves to help ensure the PSCs function as they are intended.