

OTHER PROJECT UPDATES: SEPTEMBER 2011

BOYSTOWN



- The contractor continues to install services and infrastructure for phase 1 (45% complete)
- The show house is complete to give beneficiaries an opportunity to view the type of houses that will be constructed and PSC members to view show house first
- Waste material and rubble is being sorted and removed from the site in order to complete the installation of services and houses and residents of Boystown have been employed to sort the rubble (95% complete)

DELFT SYMPHONY



- The first handovers were done in December 2010 and construction of the remaining houses is currently underway with 543 houses handed over between December 2010 to August 2011
- Beneficiaries will come from informal settlements in Nyanga, Malawi Camp and Freedom Farm, as well as backyarders
- Eskom started building the new sub-station on 8 August to ensure sufficient electrical capacity to supply the new houses

- 250 units will receive electricity and from there on batches of 100 units for the duration of the project
- Waste Management is a concern in the area and discussions with the City of Cape Town to address the situation are underway.

JOE SLOVO



- Funding approval has been granted for undertaking construction on Blue Gum Extension and Winnie Mandela - completion of the remaining services on Phase 3A ongoing
- Construction of houses on Phase 3A has started with the units along the Silimela School wall
- Engagement with the Project Steering Committee has been ongoing with the Committee assisting with the door-to-door verification of the approved beneficiaries
- Zone 30 has been completed with the names forwarded to the Provincial Department of Human Settlements
- The next phase which is currently underway is in Zone 32 and thereafter the process will be concluded in Zone 31
- A community general meeting of Joe Slovo Informal Settlement is to take place upon completion of the door-to-door verification

TRA 5



N2 Gateway Community Newsletter SEPTEMBER 2011 N° 2

The N2 Gateway Project started in 2005 and phase one is nearing completion. It is a project of the National Department of Human Settlements. Phase one will deliver about 15 000 houses. The project provides houses for residents of the informal settlements and backyarders along the N2. **Current projects include the following:** Joe Slovo • Delft Symphony • Delft 7-9 • Boystown • Temporary Relocation Areas (TRAs) • New Rest

JOE SLOVO PHASE 3: ON TRACK!

Many N2 Gateway residents will know of the ruling of the constitutional court of June 2009 on the relocation of residents of the Joe Slovo informal settlement. While the relocations were found to be legal the court placed some stringent conditions on government regarding the development of the site. One of these conditions was that 70 percent of the BNG units to be built must be allocated to the current and former residents of Joe Slovo who apply for and qualify for this housing.



Installation of services and infrastructure for Joe Slovo Phase 3A

With several years of problems and the constitutional court decision behind it, the Joe Slovo phase 3 project is at last moving forward. The project is divided into 3 phases and will deliver 2 639 houses. Phase 3A is almost complete in terms of the installation of infrastructure and services, and the building of 890 houses is about to commence. This housing will be built at a higher density than most BNG projects elsewhere. The units will be 2-story structures in blocks of 12 to 14. But they will have the standard floor space of 40m², with 2 bedrooms upstairs, and a kitchen/living space and a bathroom downstairs.

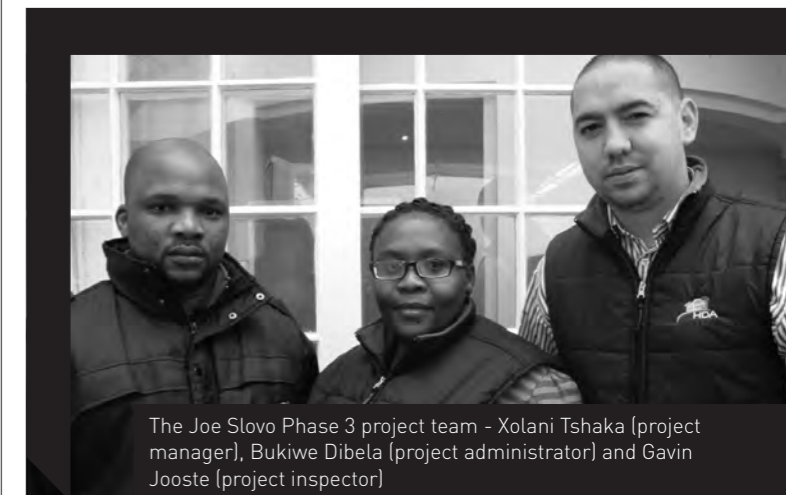
The phase 3 site is extremely well-located being close to major transport routes. Residents have easy access to areas with job opportunities. Central Cape Town is easily accessible as are the northern and southern suburbs. There are also various facilities in Langa within walking distance, such as schools, recreation facilities and services for the elderly, to name a few.

Many people to be accommodated in Joe Slovo phase 3 have lived in Langa all their lives and have waited many years for decent housing. Nonqaba, who was born in Langa in 1946, is one such person.



Nonqaba, long-term resident of Joe Slovo informal settlement, with Minister Tokyo Sexwale and Premier Helen Zille.

Having lifelong family and friendship ties in Langa, Nonqaba is determined to remain in the area. In 1995 she erected her own shack where she has lived since that time. Initially residing with her daughter, Nonqaba later had to take in her son and his partner after their shack burned down. She says that it will be a great relief for her to take up residence in a house which is warm, has no leaks and is not over-crowded. "Look around you" she says, "I have no privacy." Nonqaba is looking forward to finally being able to close a bedroom door. "I want to rest now" she says.



The Joe Slovo Phase 3 project team - Xolani Tshaka (project manager), Bukhwe Dibela (project administrator) and Gavin Jooste (project inspector)

USEFUL CONTACT NUMBERS

Housing Development Agency (HDA) Helpline: 021 481 2900
City of Cape Town (service queries, complaint & accounts): 0860 103 089
Province of the Western Cape (general queries): 0860 142 142
Emergencies (when life or property is threatened):
 Call from cell phone: 112

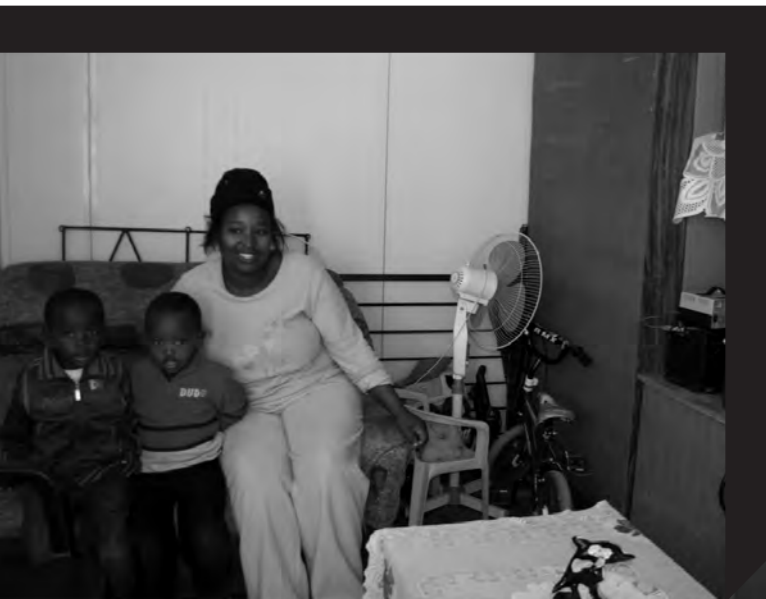
Childline: (help when a child is in danger) 08000 55 555 /021 7628198
Solid Waste (illegal dumping, wheelie bins, cleaning): 0860 103 089
Eskom customer care: 0860 037 566
Public transport information: 0800 656 463



BETTER CONDITIONS IN TRA



Part of the Constitutional Court ruling on Joe Slovo (see lead article) set out standards that the government has to meet in providing Temporary Residential Accommodation (TRA) for people relocated from the informal settlements. The Western Cape Provincial Department of Human Settlements has developed TRA 5 and 5.1 in Delft to the standards required by the ruling and has implemented other improvements. These units are for the temporary relocation of beneficiaries of N2 Gateway housing and also non-qualifiers. Phase 1 of TRA 5 consists of 800 units.



The new houses are easy to dismantle and rebuild as they are constructed from reusable sheets that slot into frames. This material is fire retardant, requires little maintenance and has a lifespan of about 15 years. After residents have relocated to permanent housing, the TRA houses can be dismantled and the materials stored. The houses can then be re-constructed on another site as needed. Unskilled local residents can be employed to help construct the TRAs and can be trained in a short period of time because the house structures are easy to erect.

The TRA 5 and 5.1 houses are all semi-detached and have a floor area of 24m². Each unit is designed with two aluminium windows to help ensure good ventilation. The areas are fenced off and security standards are much better compared to the older TRAs.

The most important key to the success of TRAs 5 and 5.1 is good day-to-day management. Ablution facilities are cleaned daily, waste is removed and tarred roads are swept weekly. The HDA undertakes monthly inspections to ensure that the standards are maintained. A crèche and two shops have been opened at TRA 5 and the installation of electricity in the units is underway.

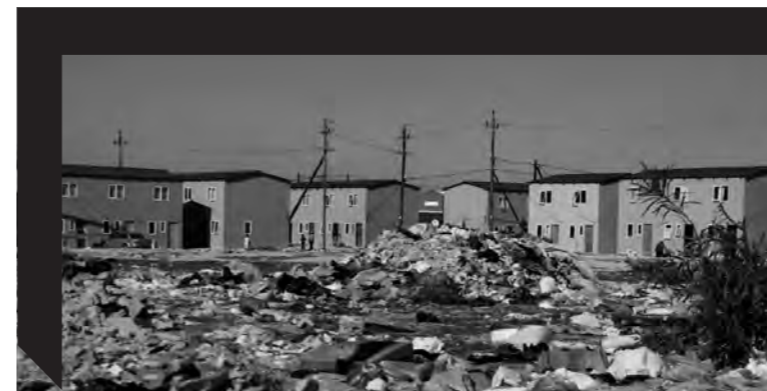
The differences in standards between the older and the new TRAs are remarkable. The improvements help ensure that those waiting to relocate to permanent housing can live in decent accommodation as it is their constitutional right.



ILLEGAL DUMPING THREATENS N2 GATEWAY COMMUNITY



The illegal dumping of rubbish has become a community problem in parts of Delft and other areas. In Delft 7-9 some residents are leaving rubbish at points where the City used to provide large skip bins. However, there is now a weekly rubbish collection service for every house. For the sake of the whole community it is critical that all residents place their rubbish in their wheelie bins and not dump it on the ground.



What's so bad about dumping rubbish?

- It makes the community look ugly and destroys civic pride... and it stinks!
- It attracts rats, cockroaches and other kinds of vermin which then breed.
- It creates significant safety hazards, particularly for children.
- It pollutes the environment and encourages the spread of disease – particularly gastric illnesses (diarrhoea & vomiting). Again, children are at the most risk.
- It does not stay where it is put. The wind blows plastic waste throughout the whole community (materials which should be recycled).

Wheelie bins are sometimes taken by criminals and used to transport stolen goods. If your wheelie bin is stolen it is important that you report it to the police and obtain a case number. You should then report it to the City. You can go into a City of Cape Town office or you can call on 0860 103 089. Illegal dumping should also be reported to the City.

To avoid theft never leave your wheelie bin in the front of your house for any longer than necessary: keep it inside the yard. You should not use it for any other purpose than to store your rubbish until collection. Police routinely confiscate wheelie bins that don't belong to people. If you use one which is not yours you could be fined. Wheelie bins remain the property of the City of Cape Town. However, there is nothing stopping you from painting your street number on it for easier identification.

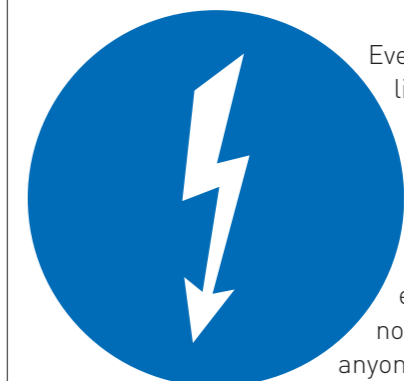
Illegal dumping is less likely to occur in cohesive communities with strong leadership. It is important that the leaders of all N2 Gateway communities help to create a local culture in which dumping is unacceptable.

SAVE ELECTRICITY: KEEP YOUR BILLS DOWN

South Africa needs to cut power usage by 10% for the current system to cope. The cost of electricity has risen sharply and will probably continue to do so. As a home owner or a tenant you will be billed for any electricity you use above your basic free allocation. For these reasons it is vital for everyone to minimise their electricity usage. Here are a few hints to help you do so:

- The lights in the house can account for 30% of your electricity use. You should buy energy saving compact-florescent light bulbs. These are more expensive but last 8 times longer than regular light bulbs. Eskom can sometimes replace your energy saving bulbs for free once they have run out. Call Eskom on 0860 037 566 for more information.
- When buying an appliance you should check the energy efficiency rating: A+ is the most efficient rating and G is the least efficient. An appliance labelled A or A+ could save you hundreds of rands a year.
- Many appliances go onto standby mode (e.g. the TV) when you are not using them but still use up a surprisingly high amount of power. Turn the power switch off whenever possible.
- Keep your geyser turned off until 20-30 minutes before you need hot water. Turn it off again after you've used the hot water you need.
- Make sure the door seals on your fridge are in good condition. Never leave the door open for longer than you need to and don't put hot food in the fridge.

ILLEGAL CONNECTIONS CAN KILL!



Every year across the country lives are lost due to illegal electrical connections. Sadly, many of these are children who die at play. There are many factors that can make such connections extremely dangerous. Under no circumstances should anyone but a qualified electrician attempt to connect electrical wires. It is the responsibility of all residents to report illegal electrical connections to Eskom and you may do so without having to identify yourself. You might save a life!